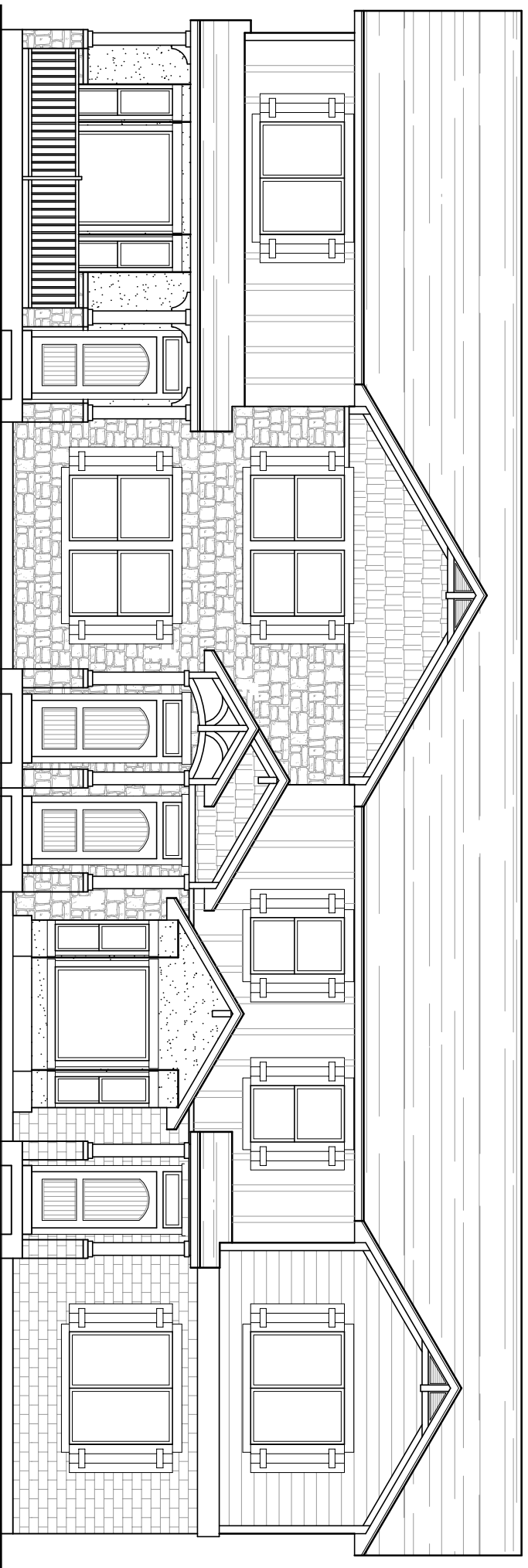


Cove at Pleasant View  
 4-Plex Townhomes  
 Front Elevation



<b>"ASHLEY" Sq. Ft.</b>	
Main level -	773 sf
Upper level -	778 sf
<b>Total -</b>	<b>1,551 sf</b>
Garage -	400 sf

<b>"BLAIR" Sq. Ft.</b>	
Main level -	794 sf
Upper level -	815 sf
<b>Total -</b>	<b>1,609 sf</b>
Garage -	400 sf

<b>"CARLY" Sq. Ft.</b>	
Main level -	770 sf
Upper level -	774 sf
<b>Total -</b>	<b>1,554 sf</b>
Garage -	400 sf

<b>"DEVIN" Sq. Ft.</b>	
Main level -	784 sf
Upper level -	805 sf
<b>Total -</b>	<b>1,589 sf</b>
Garage -	400 sf

Cove at Pleasant View "Ashley" Floor plans  
 Main: 773 sf Upper: 778 sf Garage: 400 sf

